



Project Management of Refurbishment *Marsdens Developments, Leeds*

Bradley-Mason LLP was engaged by Marsdens Developments Ltd to provide a complete consultancy service including pre-acquisition survey, measured survey, asbestos report, design services and project management on this Grade II listed property located in the prestigious Park Square Conservation Area of Leeds.

Following acquisition, a high-end office refurbishment scheme commenced. Works included repairs and maintenance items identified in the pre-acquisition survey together with sympathetic interior decoration to complement the property's historic features.



To increase let-able floor space plasterboard fireplace covers were stripped out. In the process of the strip-out two period fire surrounds were discovered; works were adapted to suit the discovery and the surrounds were carefully restored as a feature of the new offices.

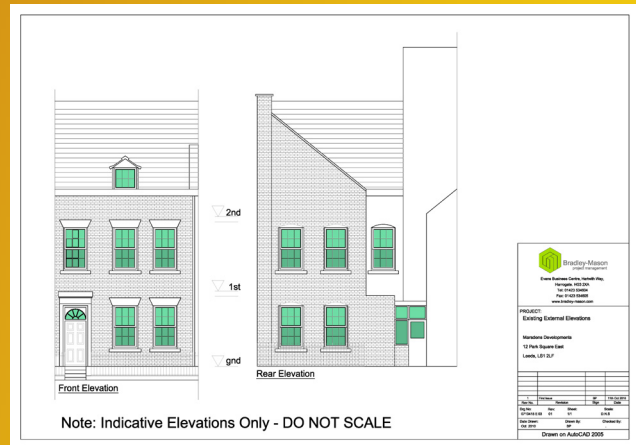
By engaging Bradley-Mason from start to finish the client saved time and hassle and was provided with a comprehensive service which provided added value for money. We are pleased to report that the project finished on time and to full client satisfaction.



Pictured above: front elevation on completion.



Pictured above: entrance room after refurbishment.



Example of plans produced as part of measured survey.

For more information contact info@bradley-mason.com or call us on 01423 534 604.