

# Building Investment Survey

*Private Client, Frankfurt, Germany*

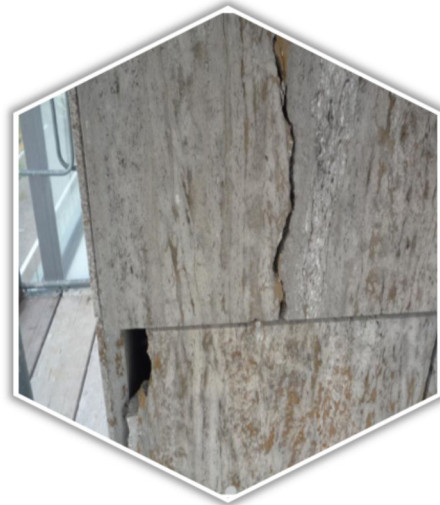
Bradley-Mason LLP were engaged to undertake a Building Investment Survey of a 770 bed hotel in Frankfurt, Germany.

The property dated from the 1960s and was located on the banks of the River Main.



Our investment survey concentrated on the general standard and condition of the building and noted any principal defects and shortcomings which could have affected the investment interest.

We also reported on budget maintenance costs, advised on local code compliance and highlighted necessary fire precautions.



One of the key features of our report was that it struck a balance between detail and length; it was concise enough to be easily readable but detailed enough that problems could be understood and remedied.

## Head Office Contact

Bradley-Mason LLP, Windsor House,  
Cornwall Road, Harrogate HG1 2PW

t: +44 (0) 1423 611604  
e: [info@bradley-mason.com](mailto:info@bradley-mason.com)

## Regional Contacts

**Manchester Office**  
t: +44 (0) 161 403 0143

**Sheffield Office**  
t: +44 (0) 114 368 0104

**Bristol Office**  
t: +44 (0) 117 212 0139

**London Office**  
t: +44 (0) 203 390 1217